

Ancient Kofun at the southernmost tip of Japan Tojin Kofungun



No.33 Kofun



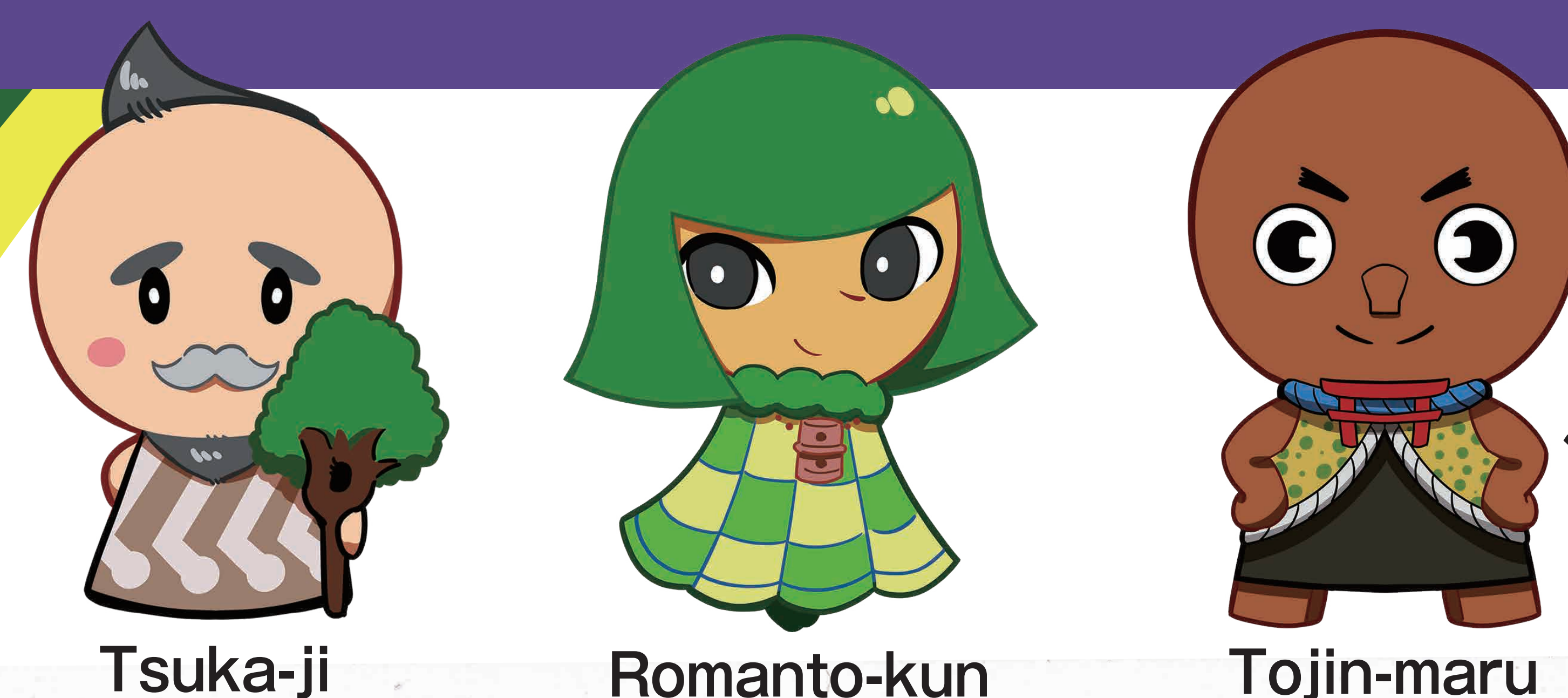
No.100 Kofun



No.55 Kofun



An investigation site

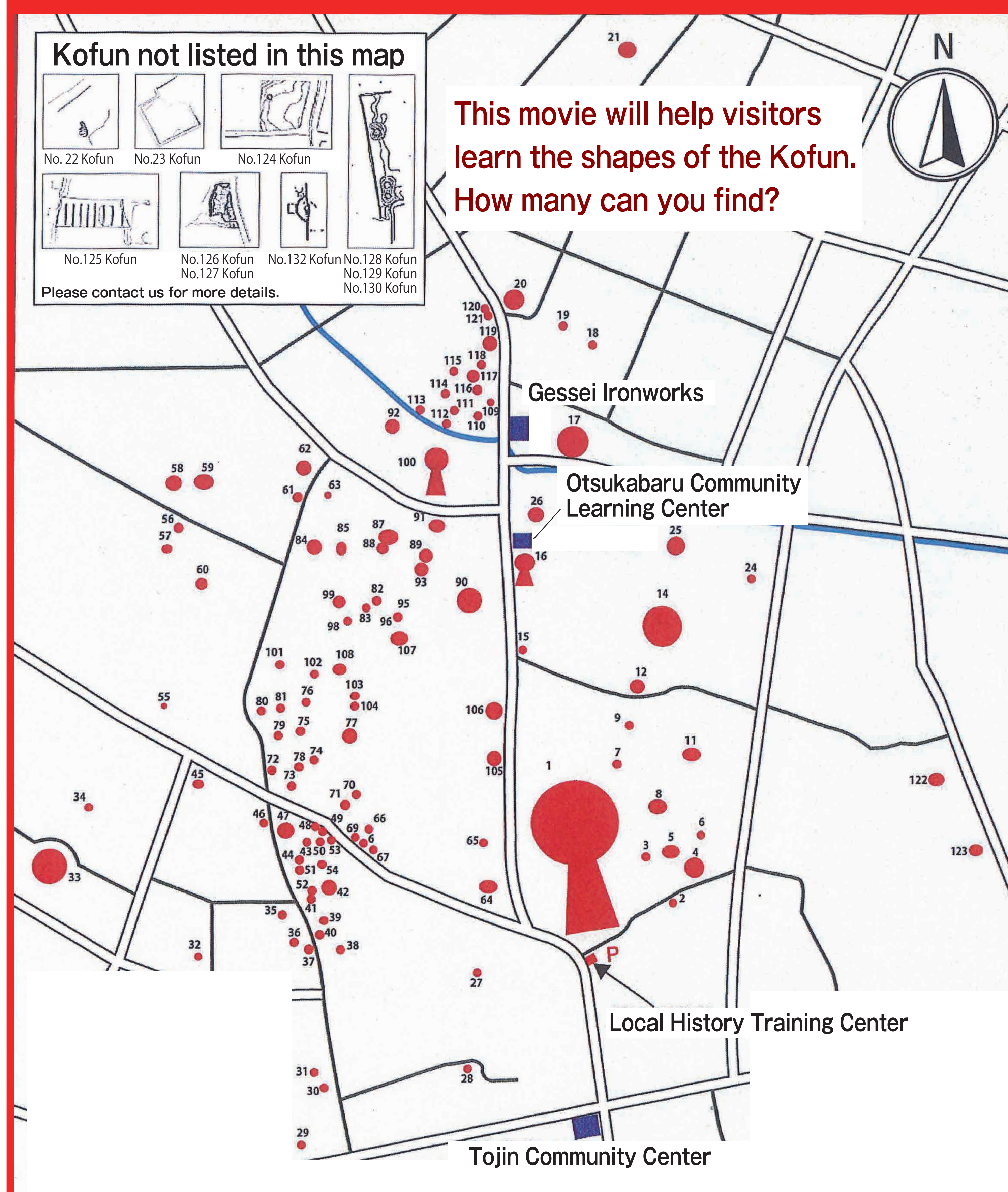


Tsuka-ji

Romanto-kun

Tojin-maru

Higashikushira Town: Tojin Kofungun Map



Tour around Kofun at the southernmost tip of Japan

This is one of the largest Kofungun in Kagoshima prefecture with a total number of 130 mounds.

The No. 1 Kofun, which was constructed in the beginning of the mid-Kofun period, is the largest one in Kagoshima prefecture and the 3rd largest in Kyushu. This indicates the great power possessed by the person buried here.

Attractions (Why Kofun is special)

- ① The largest keyhole-shaped Kofun in Kagoshima prefecture, and the largest in Kyushu where entry is permitted!
- ② A shrine is located at the top!
- ③ You can see the stone lid of the stone burial chamber!
- ④ Find the Kofuns scattered around the area!

Tojin Kofungun is the largest Kofungun in Kagoshima prefecture. It is believed that its construction began in the early part of the 5th century and continued until near its end.

No. 1 Kofun (Tojin Otsuka Kofun) is the largest of all with the length of approximately 185 meters including the mound and the surrounding moat. This Kofungun is considered to be quite significant in understanding the extant relationship between the Shibushi Bay coastal area and the Yamato Court of the time period. Due to this historical and cultural value, 130 Kofun have been designated as national historic sites.

Inquiry:

Social Education Department,
Higashikushira Town Hall
Tel: +81-994-63-3134



Local History Training Center
4848-1, Shinkawanishi, Higashikushira Town
Open: 10:00am - 3:00pm (closed on Mondays)

